

Automated Driving Services in Rural Areas

Koichi Sakai

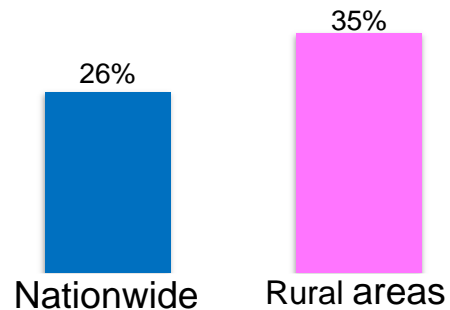
Director, ITS Policy and Program Office, Road Bureau
Ministry of Land, Infrastructure, Transport and Tourism (MLIT),
Government of Japan

- 1. Challenges facing rural areas**
- 2. FOTs of automated driving services in rural areas**
- 3. Deployment of automated driving services in rural areas**

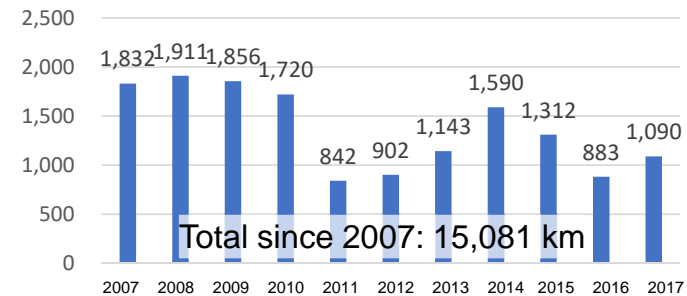
- 1. Challenges facing rural areas**
- 2. FOTs of automated driving services in rural areas**
- 3. Deployment of automated driving services in rural areas**

Challenges facing rural areas

Comparison of aged population (2015)

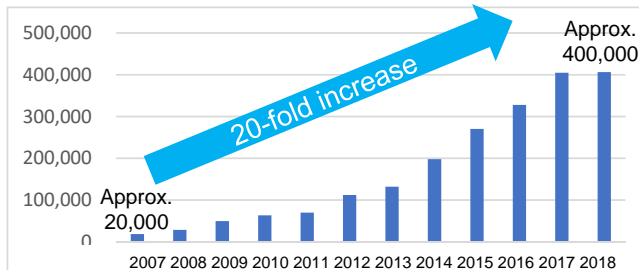


Total length of discontinued regular bus routes

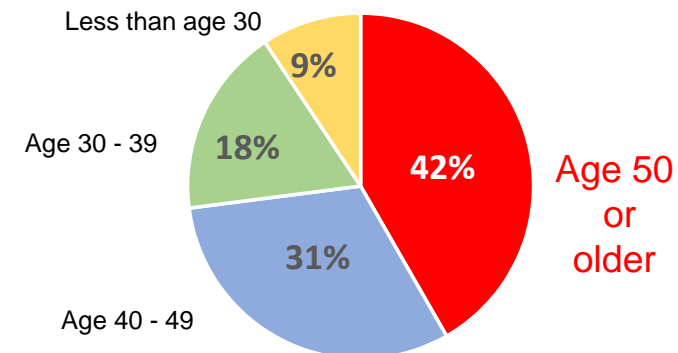


Rapid increase in senior citizens who cannot drive

Number of drivers (age 65 or over) who have voluntarily surrendered their driver's license



Lack of home deliveries due to truck driver shortage

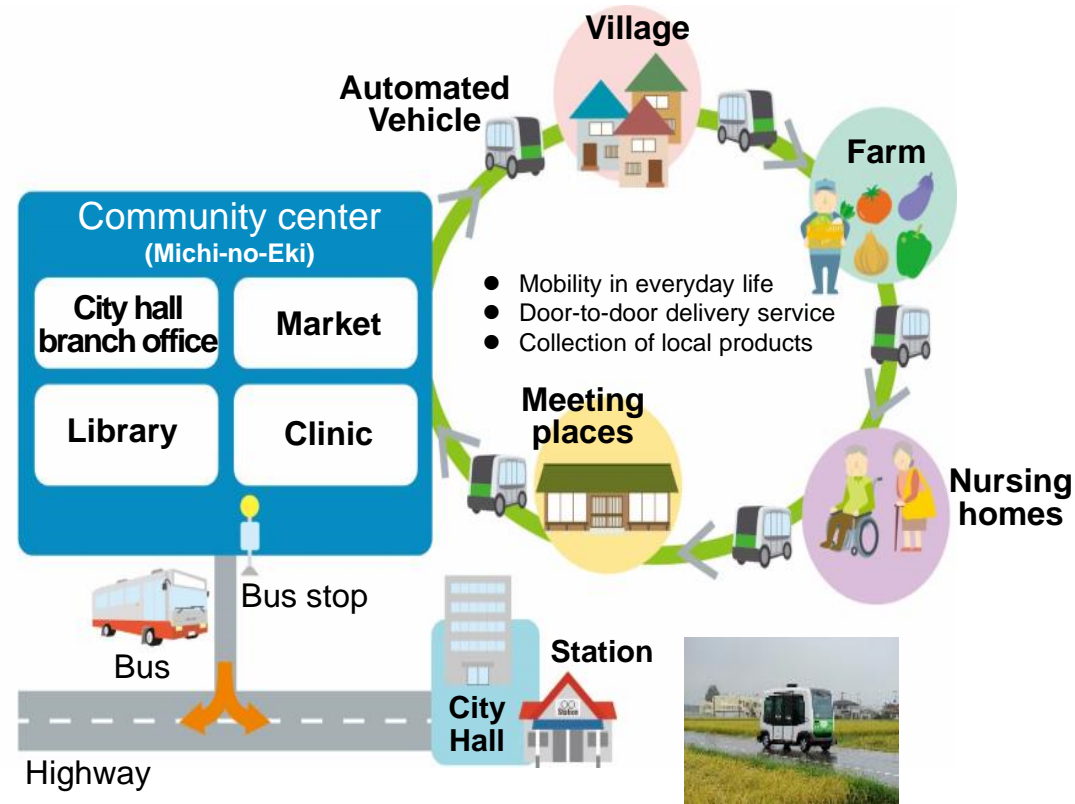


Continuation crisis of villages in rural area

1. Challenges facing rural areas
- 2. FOTs of automated driving services in rural areas**
3. Deployment of automated driving services in rural areas

FOTs of automated driving services in rural areas

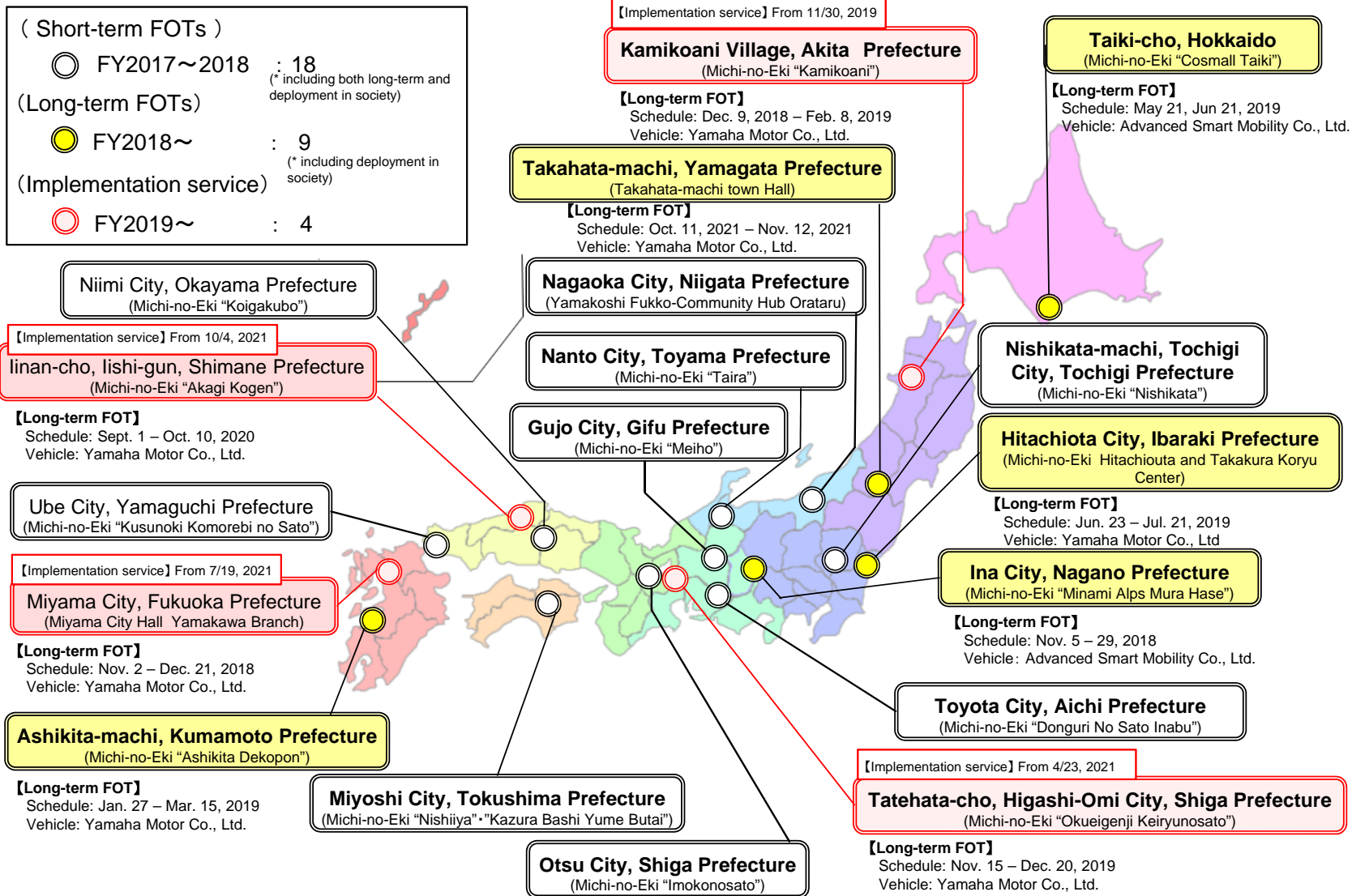
- Expected to support transport of both people and goods, and further local revitalization.
- A series of FOTs of automated driving services based at Michi-no-Eki have been started since 2017.



AV : Automated driving Vehicle

FOTs have been implemented in rural areas

As of October 2021



1. Challenges facing rural areas
2. FOTs of automated driving services in rural areas
3. **Deployment of automated driving services in rural areas**