

Shared Autonomous Vehicle (SAV) Program Progress Report



Prepared for SIP-adus WS2018, Tokyo Japan

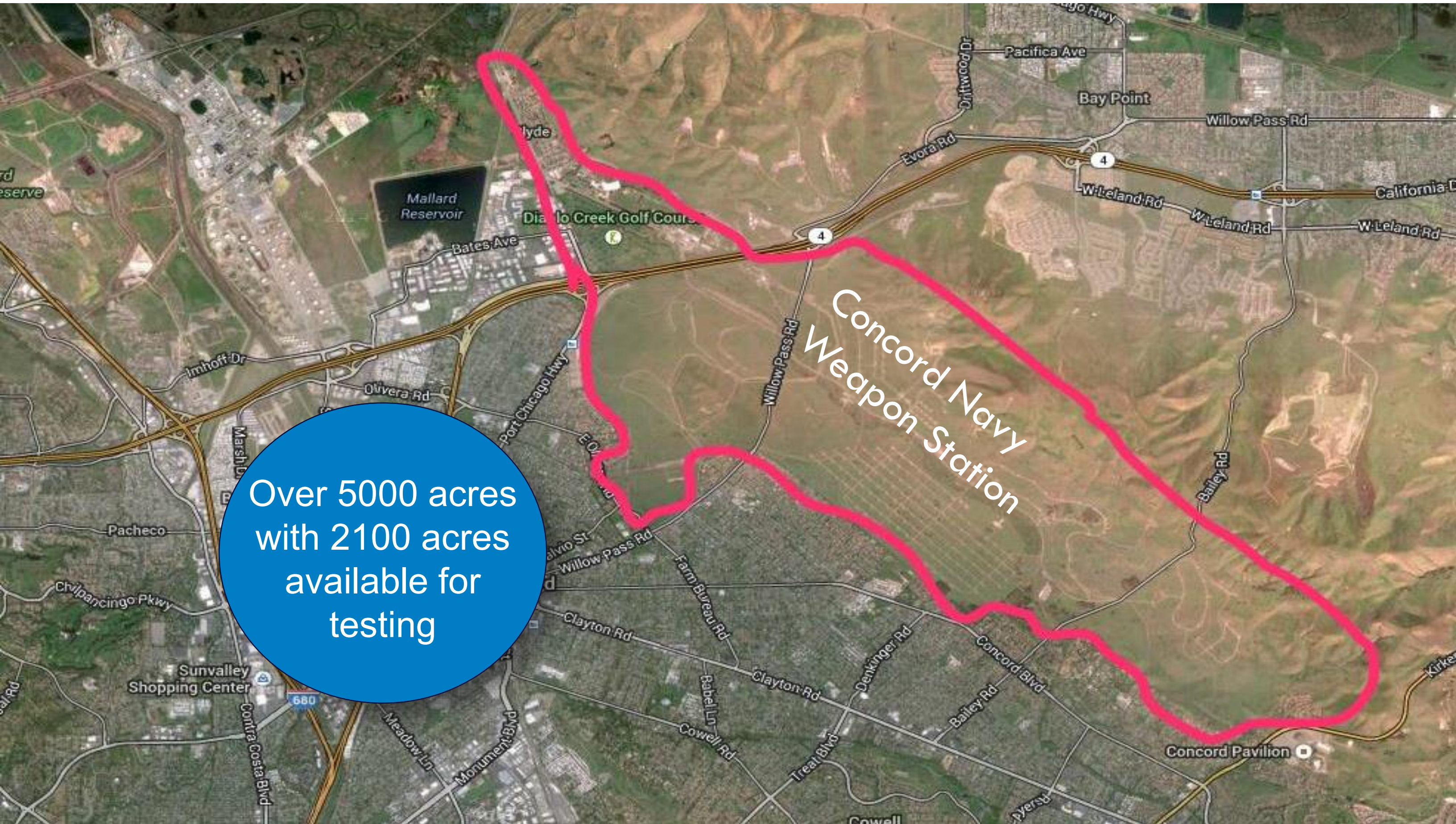


Habib

habib@amobility.com



Redefining Mobility

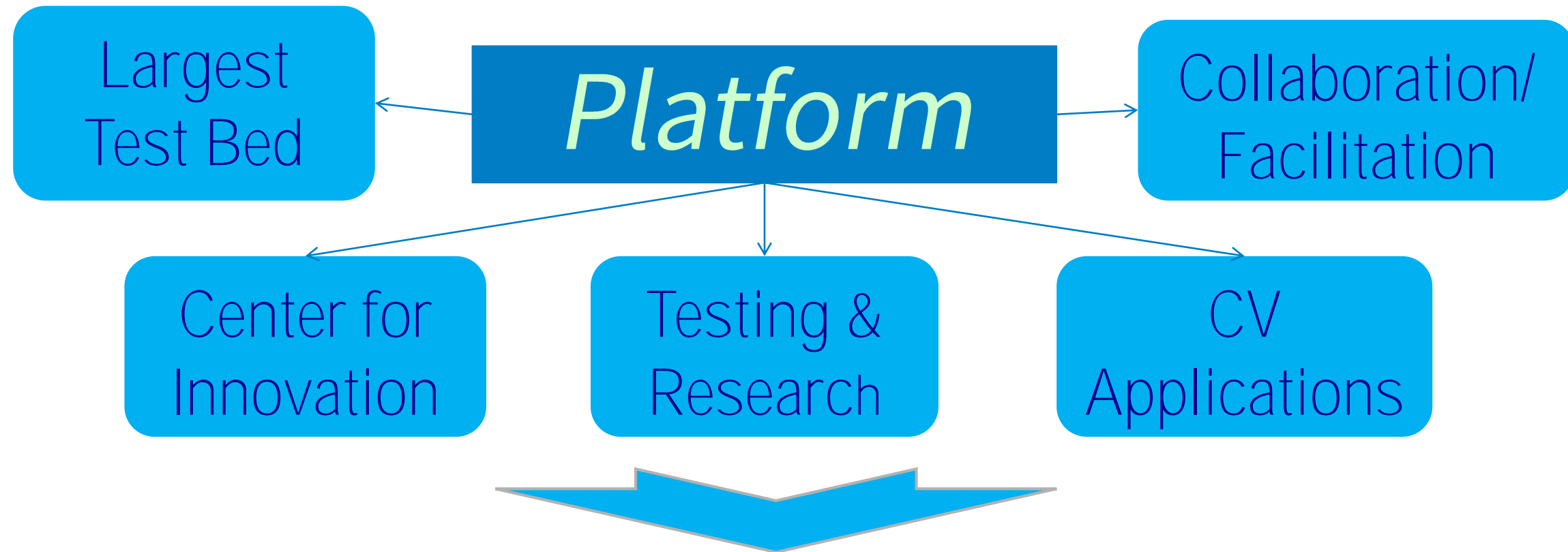


Over 5000 acres
with 2100 acres
available for
testing

Concord Navy
Weapon Station

What is GoMentum Station?

A Platform for Transforming the Future

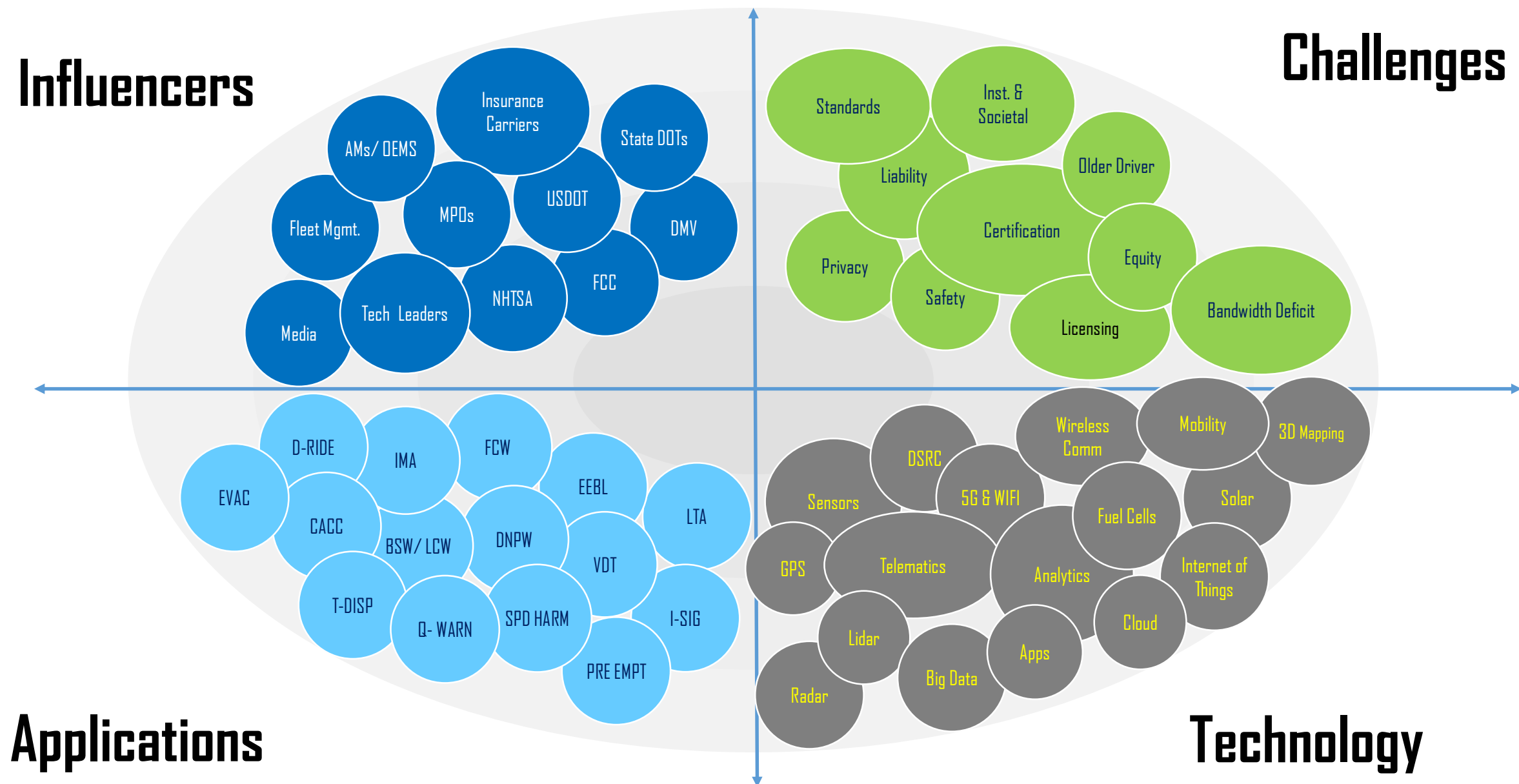


Redefining Mobility

Redefining Mobility.



GoMentum Station Macro Environment



Redefining Mobility.

We are a Global AVPG



GoMentum Station is an International Entity
Redefining Mobility.



GoMentum Station is Multimodal

Key AM Partners

Testing at GoMentum Station

EASY
MILE

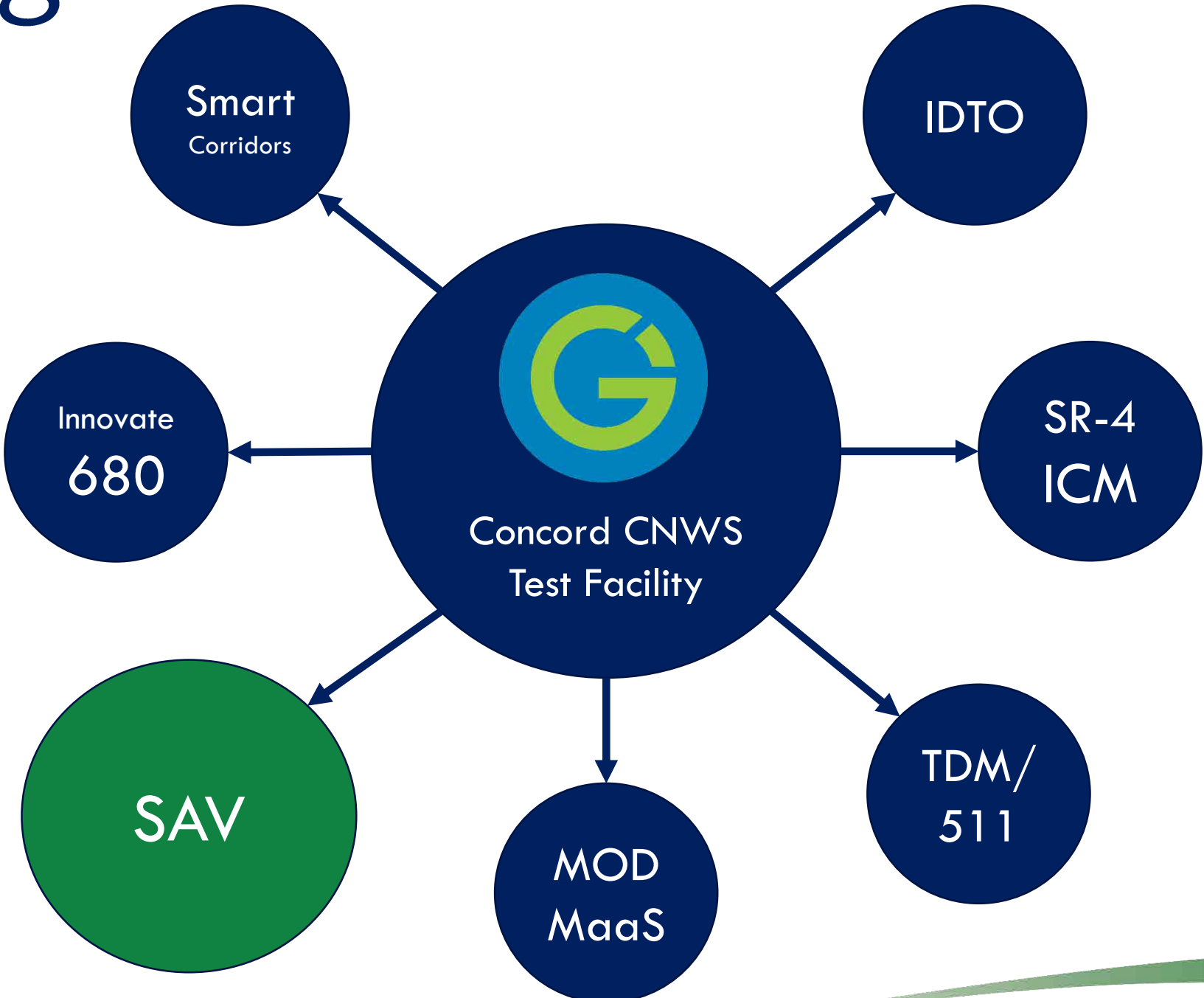


Redefining Mobility.

AMG
ADVANCED
MOBILITY
GROUP

GOMENTUM
STATION

GoMentum Station is a Comprehensive CAV Program



Redefining Mobility.



SAV Partners:



Redefining Mobility.





OHMIO



EASY MILE

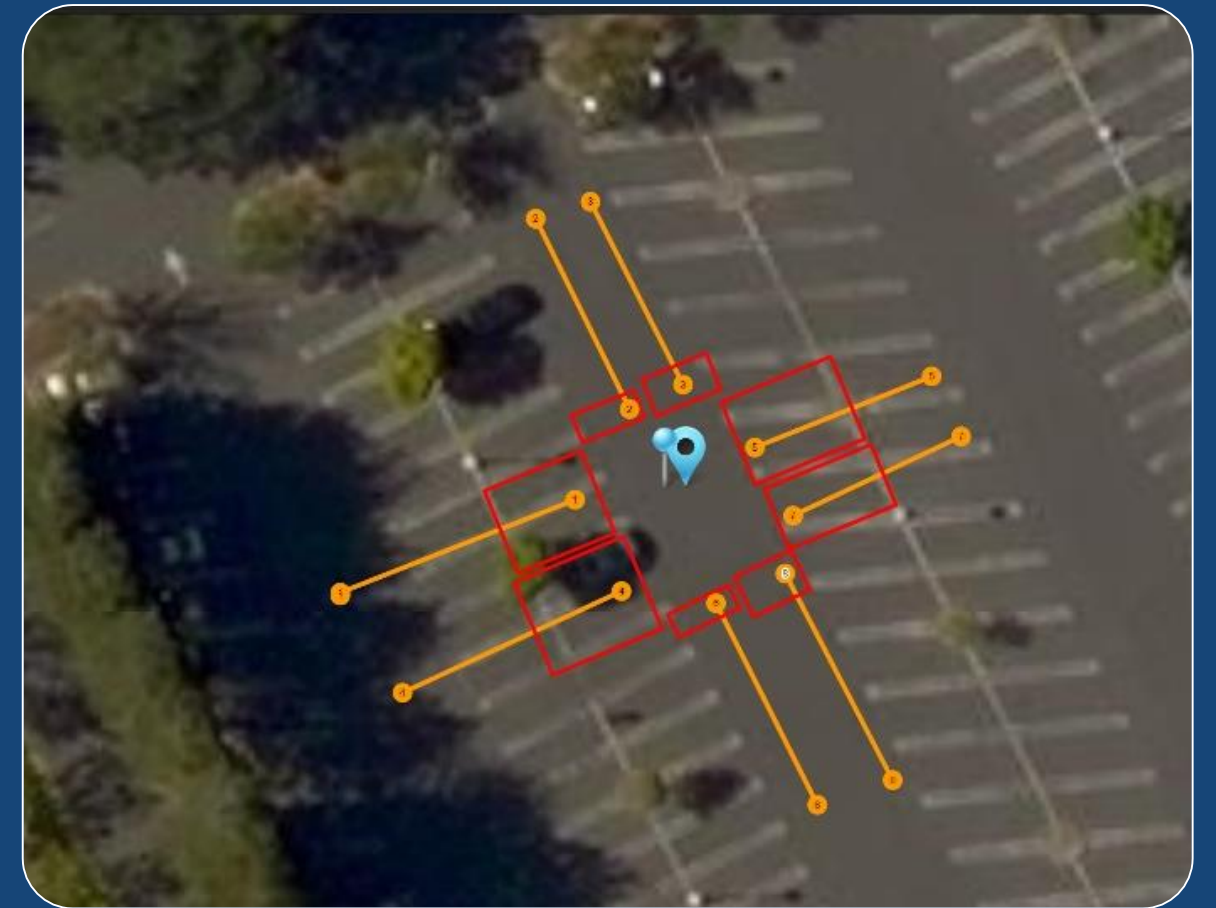


LOCAL
MOTORS

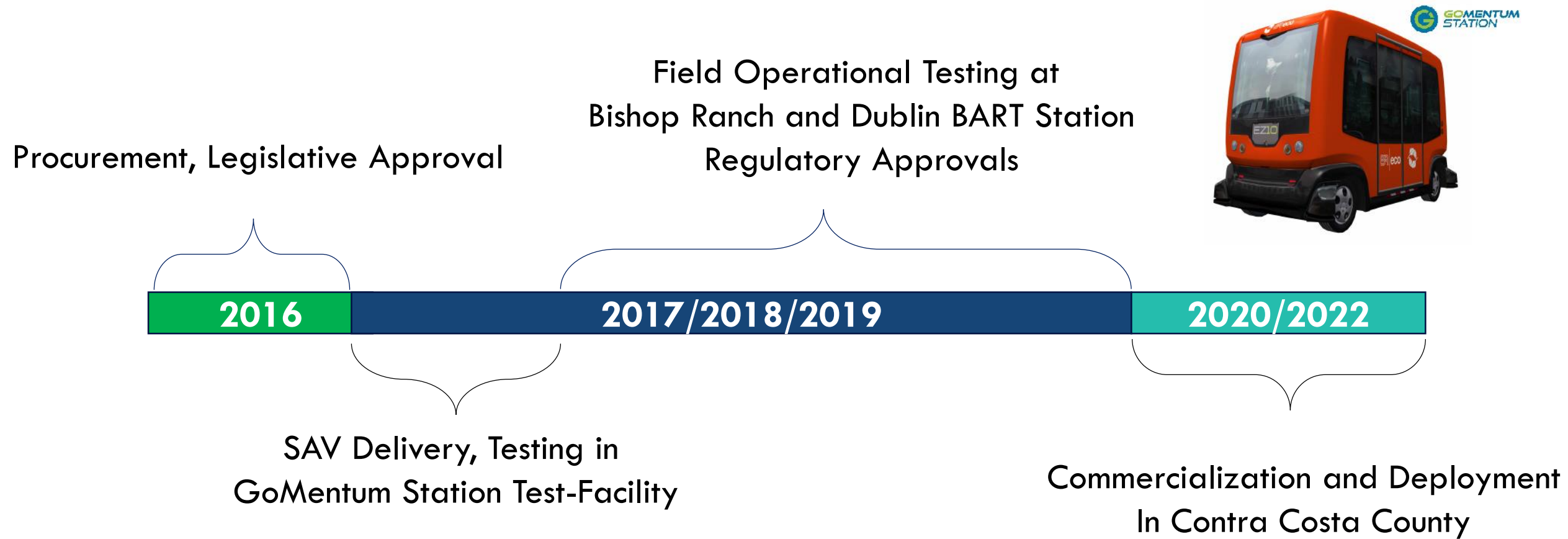


NAVYA

TESTING



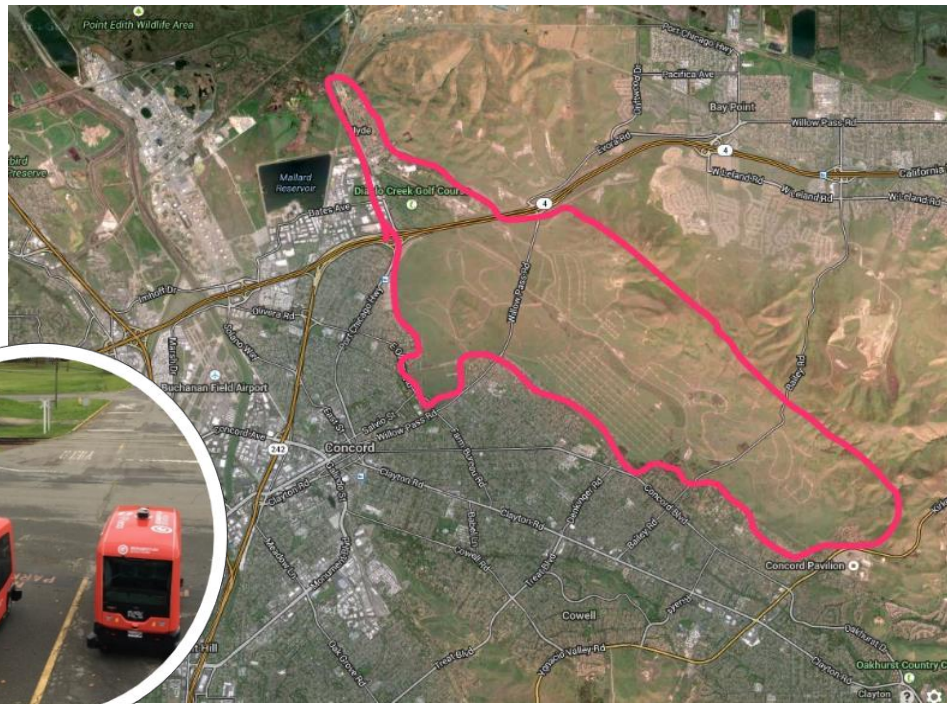
SAV Program Schedule



Redefining Mobility.

SAV Testing Plan Phases (I & II)

Phase I



Testing at GoMentum Station

Phase II (a)



Confined Environment of Bishop Ranch, San Ramon

Phase II (b)

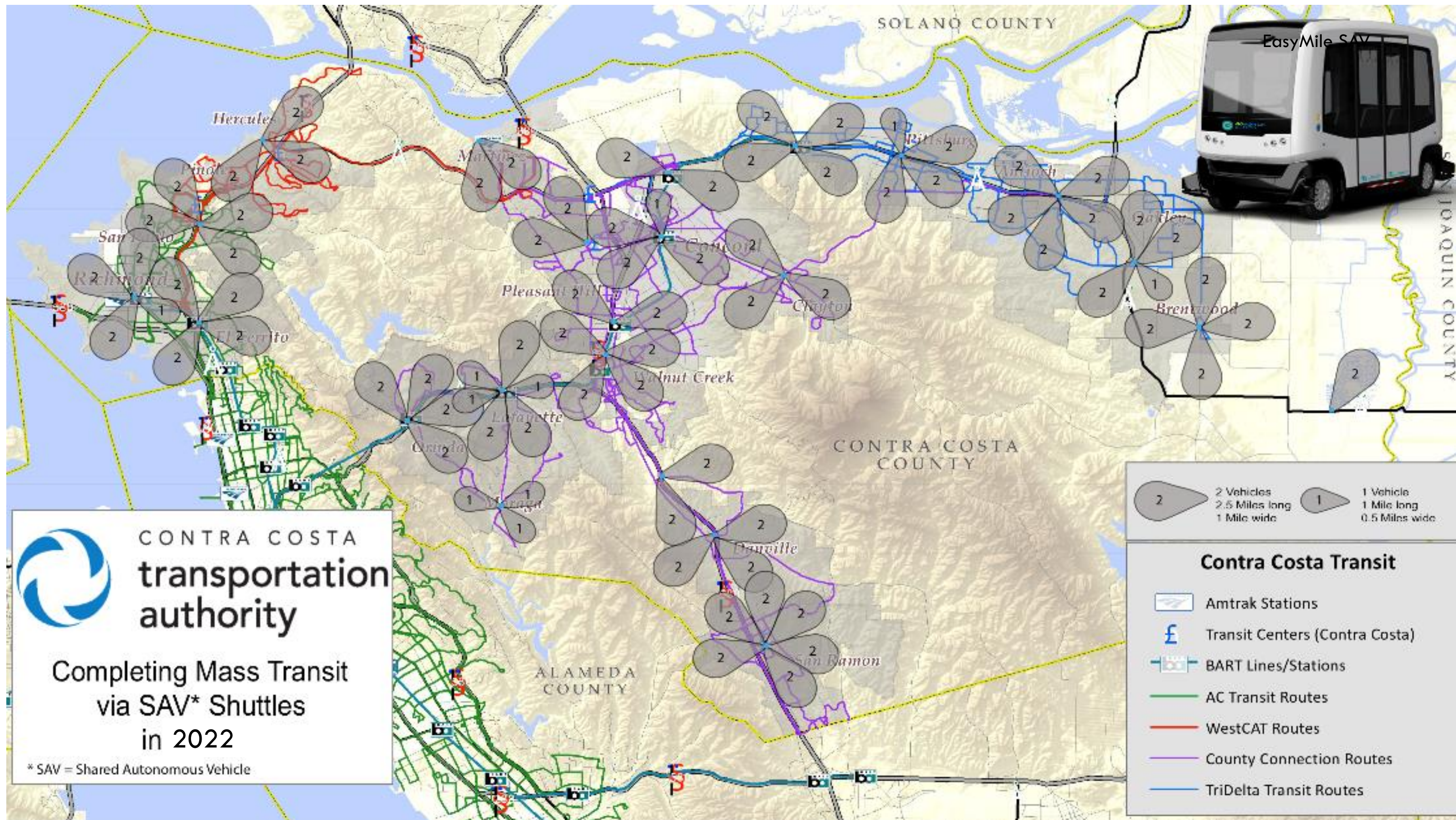


Public Roads of Bishop Ranch

Redefining Mobility.



Phase III Implementation



SAV Pilot Program – Project sites

**Bishop Ranch Business Park
in San Ramon
Model**



Public-Private

**Livermore Amador Valley Transit Authority (LAVTA) at
Dublin/Pleasanton BART Station
Model**



Public-Public

Redefining Mobility.



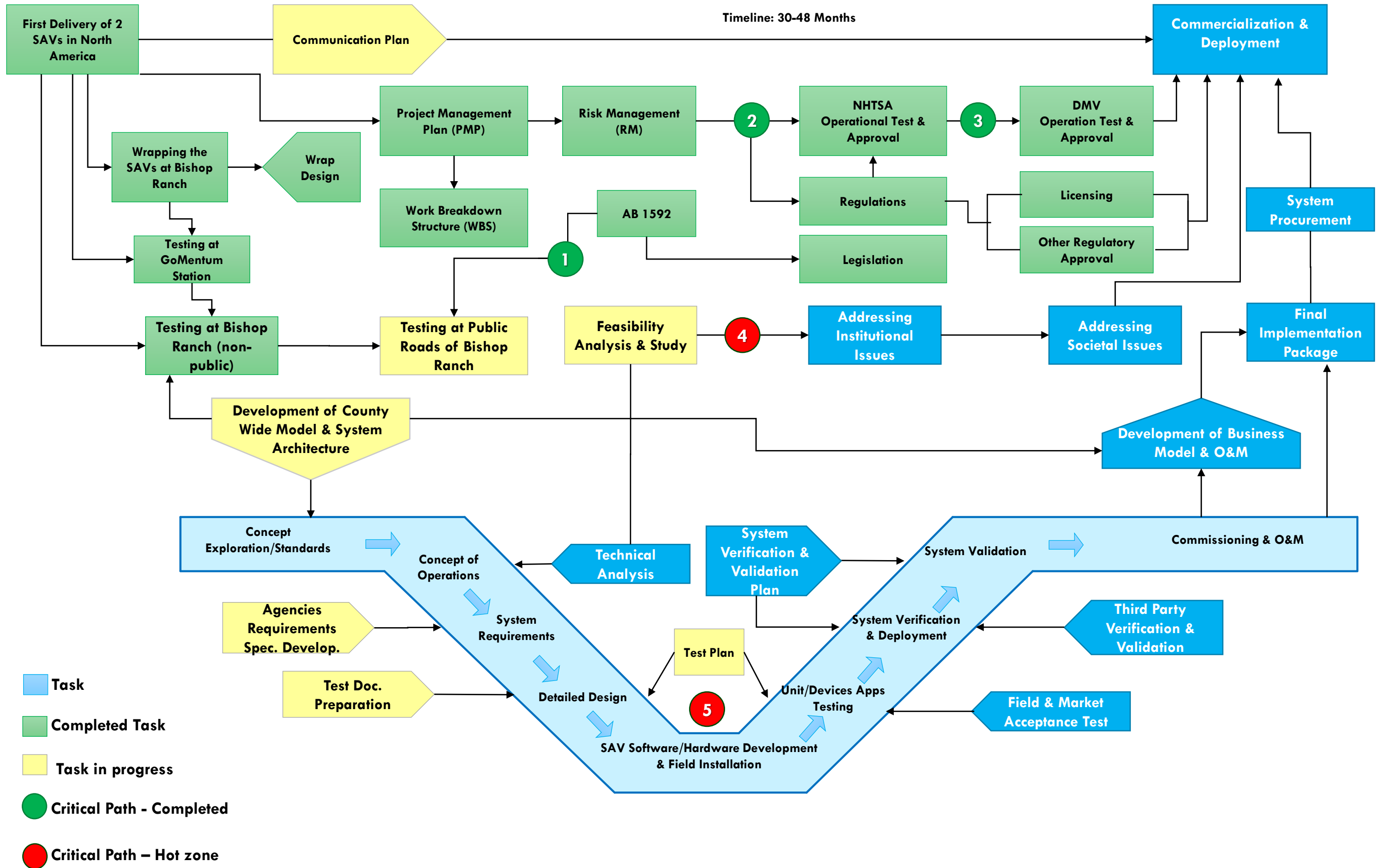


Technical Approach

CCTA First Mile / Last Mile Project – Task Management & Critical Path

7/25/2016

2019/20



Note: The CCTA FM/LM Critical Path is not Budget/Resource Constrained, it is process constrained.

Proprietary & Confidential

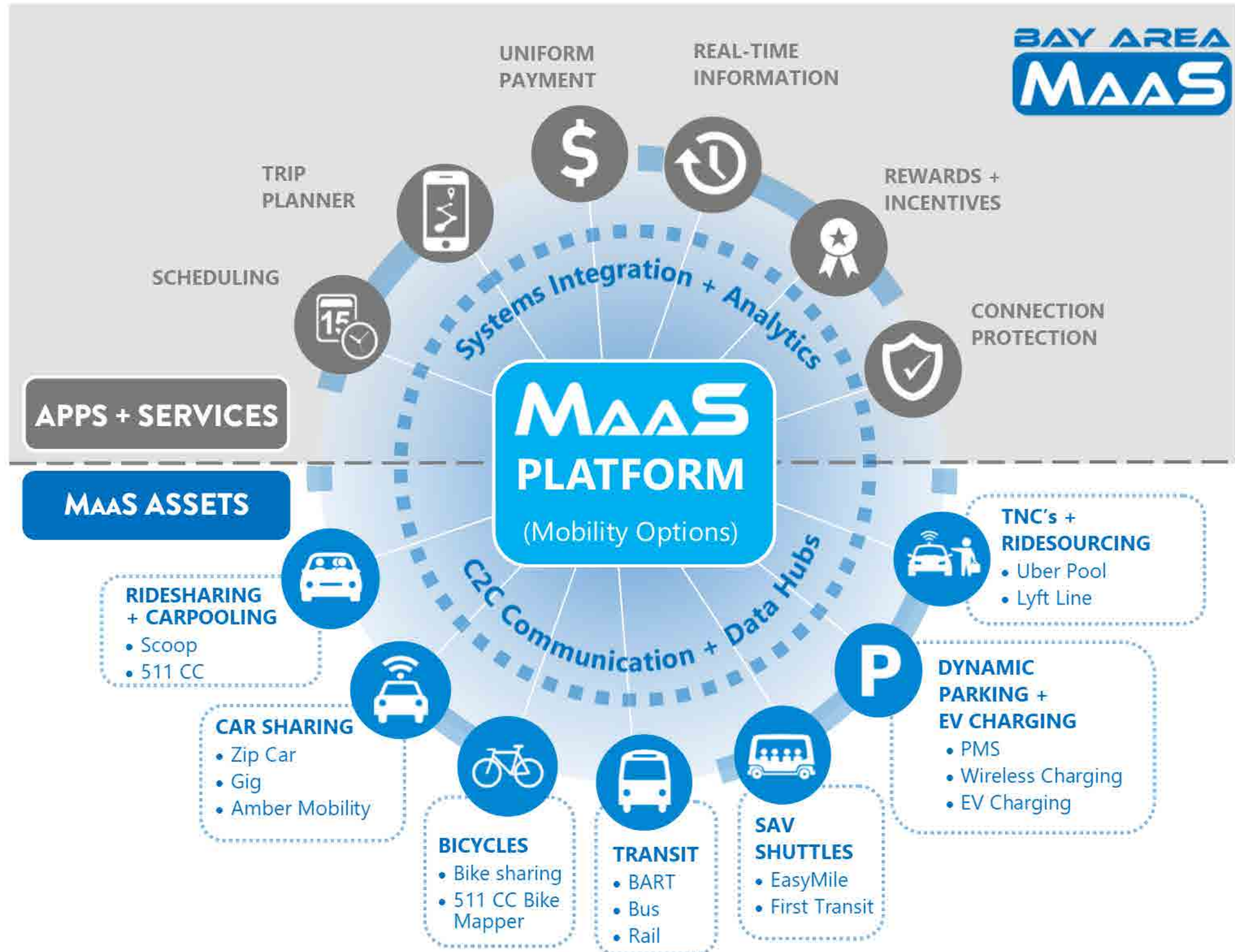
Lessons Learned

- **Institutional and regulatory challenges** were far more complicated than envisioned.
- **Development of a comprehensive test plan** with specific test case scenarios needs to be prepared up front before starting the procurement.
- It must be understood that **testing in real world environment** is totally different than testing in a controlled environment.
- Vendors high level specifications and **technology maturity** (although theoretically true) need to be validated in field
- **Collaboration** between Public and Private entities is essential for a project of this nature
- Expect some **unexpected road blocks** i.e., CPUC jurisdictions and prepare stakeholders for these challenges early in the process
- Always keep in mind that there is no **Guide Book** for this program and we are developing one for the first time
- Make sure your management team is up for **challenges** as you are

Redefining Mobility.

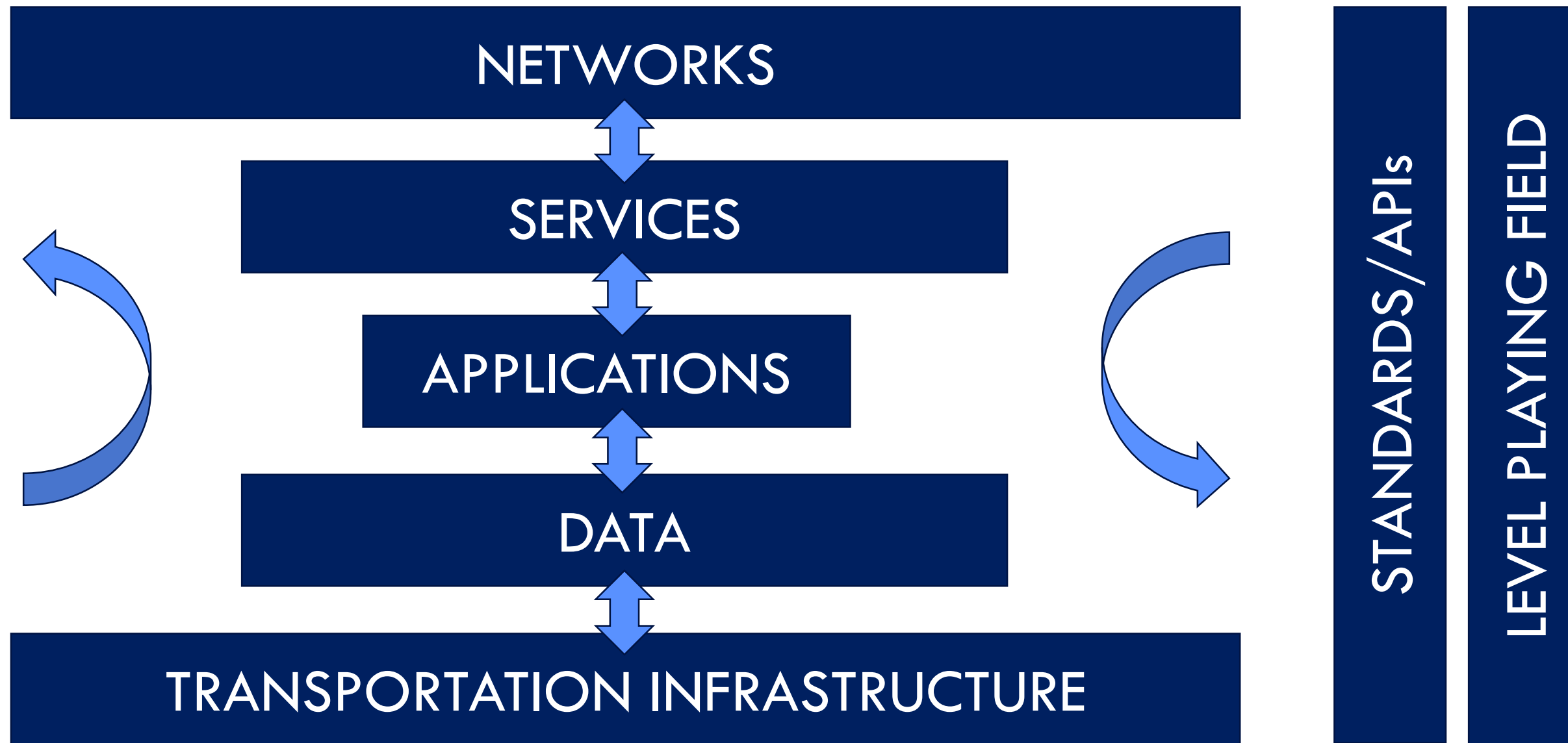


GoMentum Station New MOD Initiative



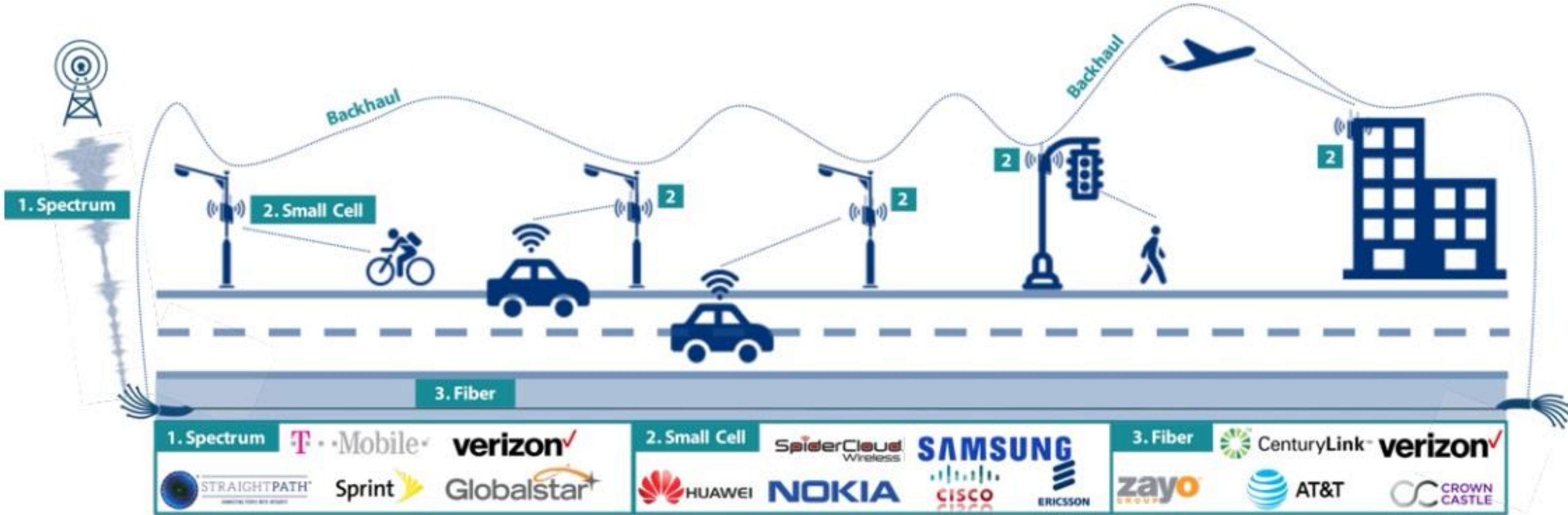
Mobility on Demand (MOD) is a combination of **public and private** transportation services that provides **personalized mobility options** based on traveler needs, to enable **end-to-end journeys** paid for by the traveler with a **single payment**, and aims to **optimize the transportation system**.

MOD Multimodal Architecture: Seamless Integration



Redefining Mobility.

GoMentum Station 5G Platform Initiative



Redefining Mobility.



Join us for our 5th Redefining Mobility Summit on March 8th, 2019 in San Francisco



CONTRA COSTA
transportation
authority



GOMENTUM
STATION