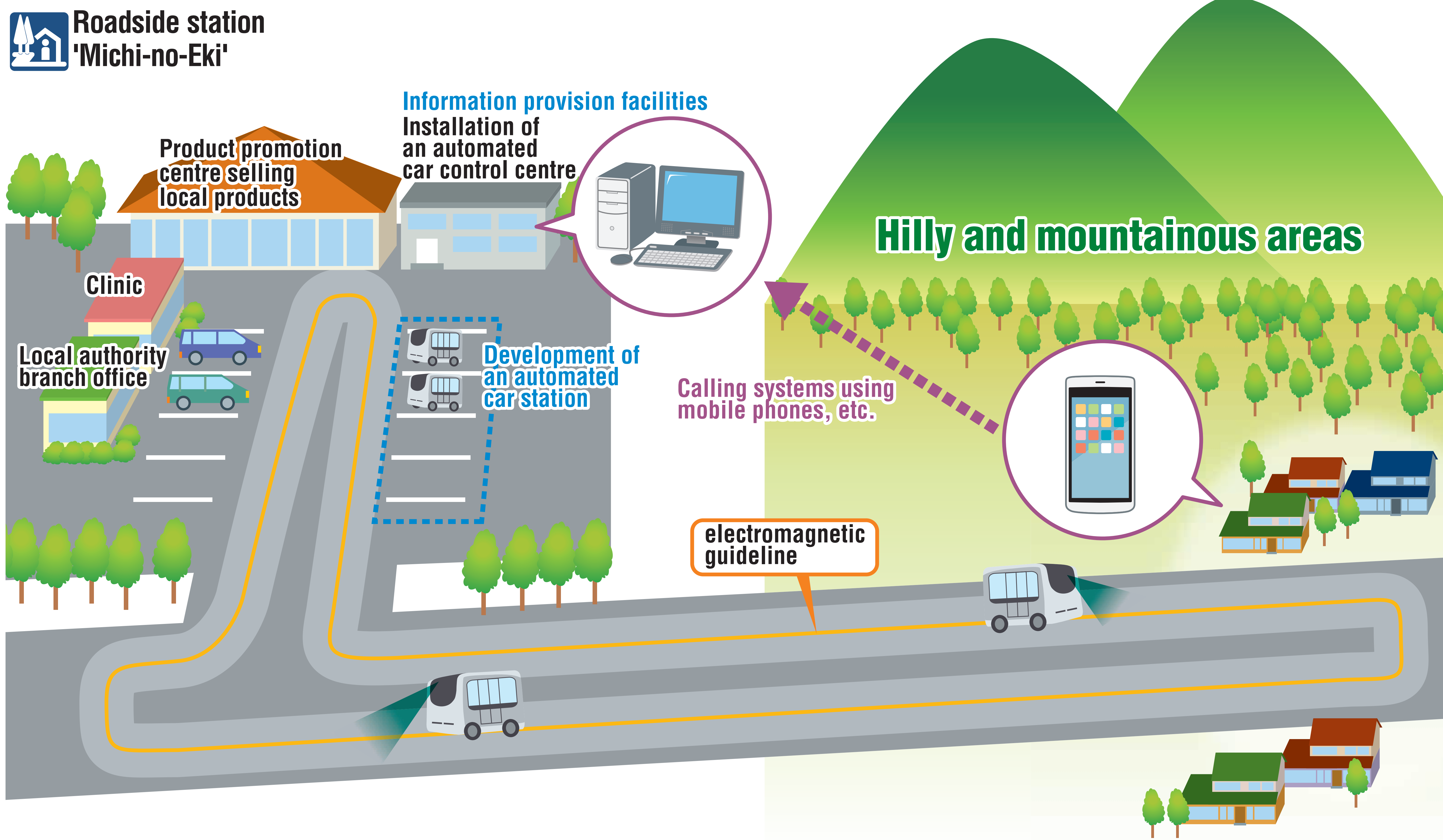


ADUS in hilly and mountainous area

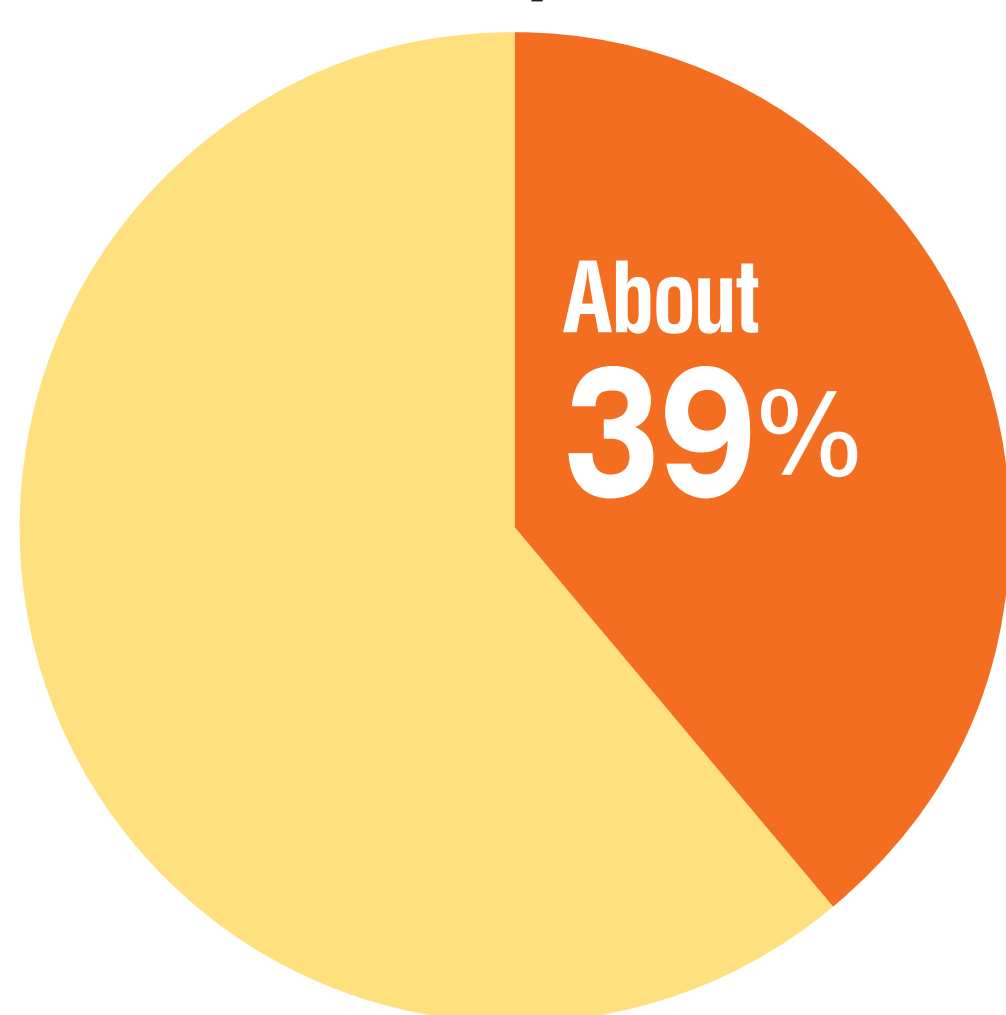
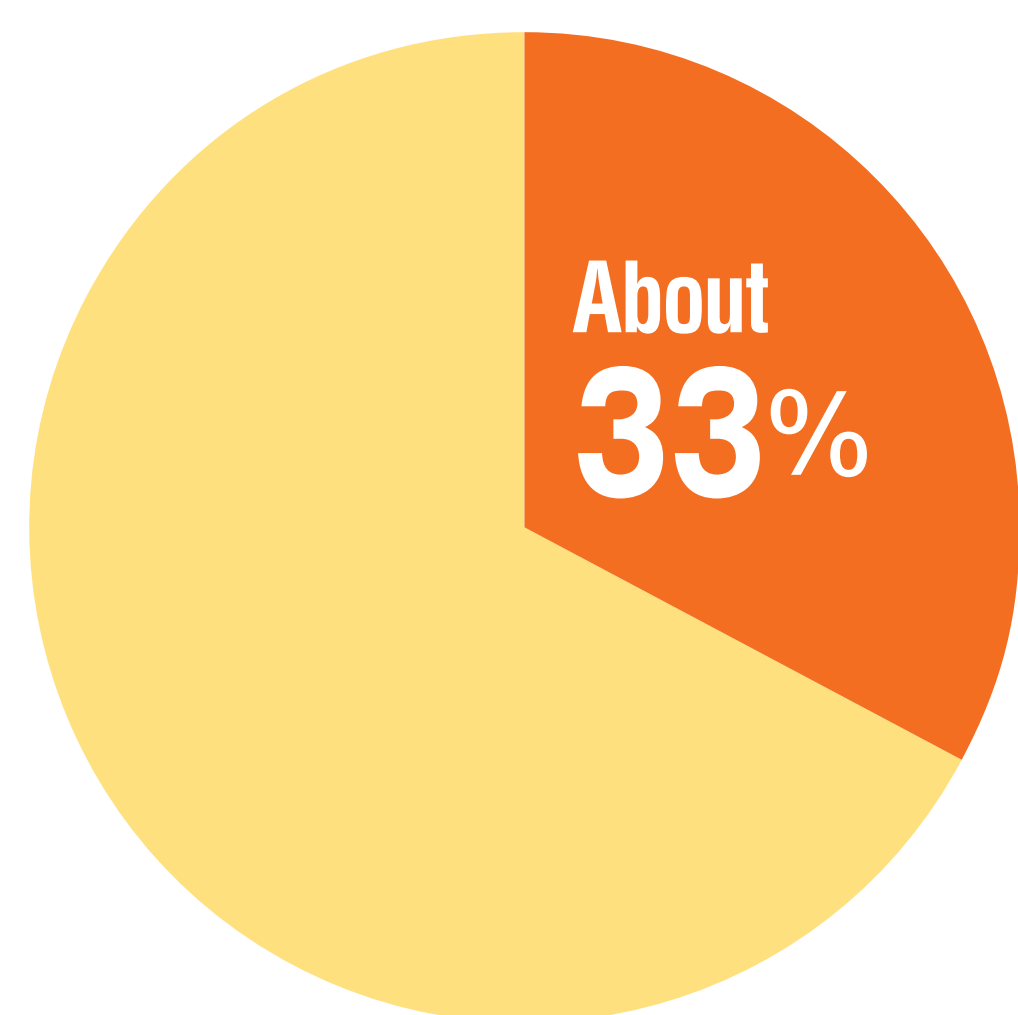
ADUS in hilly and mountainous areas: From FOTs to implementation in society



Functions of "Michi-no-Eki" roadside stations in hilly and mountainous areas

About 33% are within 1 km* from a town hall.

About 39% are within 1 km* from a hospital/clinic.



N = 885 roadside stations (as of November 2017) * Linear distance from a Michi-no-Eki

Experiments have been underway since 2017 at roadside stations "Michi-no-Eki" and at other facilities located in the social cores of hilly and mountainous areas. The final stage of the experiment is in progress, for real-life implementation scheduled for 2020. Consideration of how automated driving can be economically justified in the aging hilly and mountainous areas is one of the biggest challenges for such implementation.

In October 2017, 885 Michi-no-Eki roadside stations among all 1,117 stations are located in 617 municipalities, which account for 54% of the 1,142 hilly and mountainous communities in Japan. They in turn account for nearly 70% of all (1,718) municipalities in the country. Of those roadside stations, 33% to 39% are located within a distance of 1 km from a town hall and a hospital/ clinic, and about 45% (395 roadside stations) have a bus stop. Thus, Michi-no-Eki roadside stations play an important role in serving as hilly and mountainous community centres.

Automated vehicles operation by volunteers



Delivering agricultural products

